







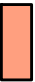
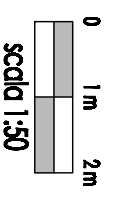
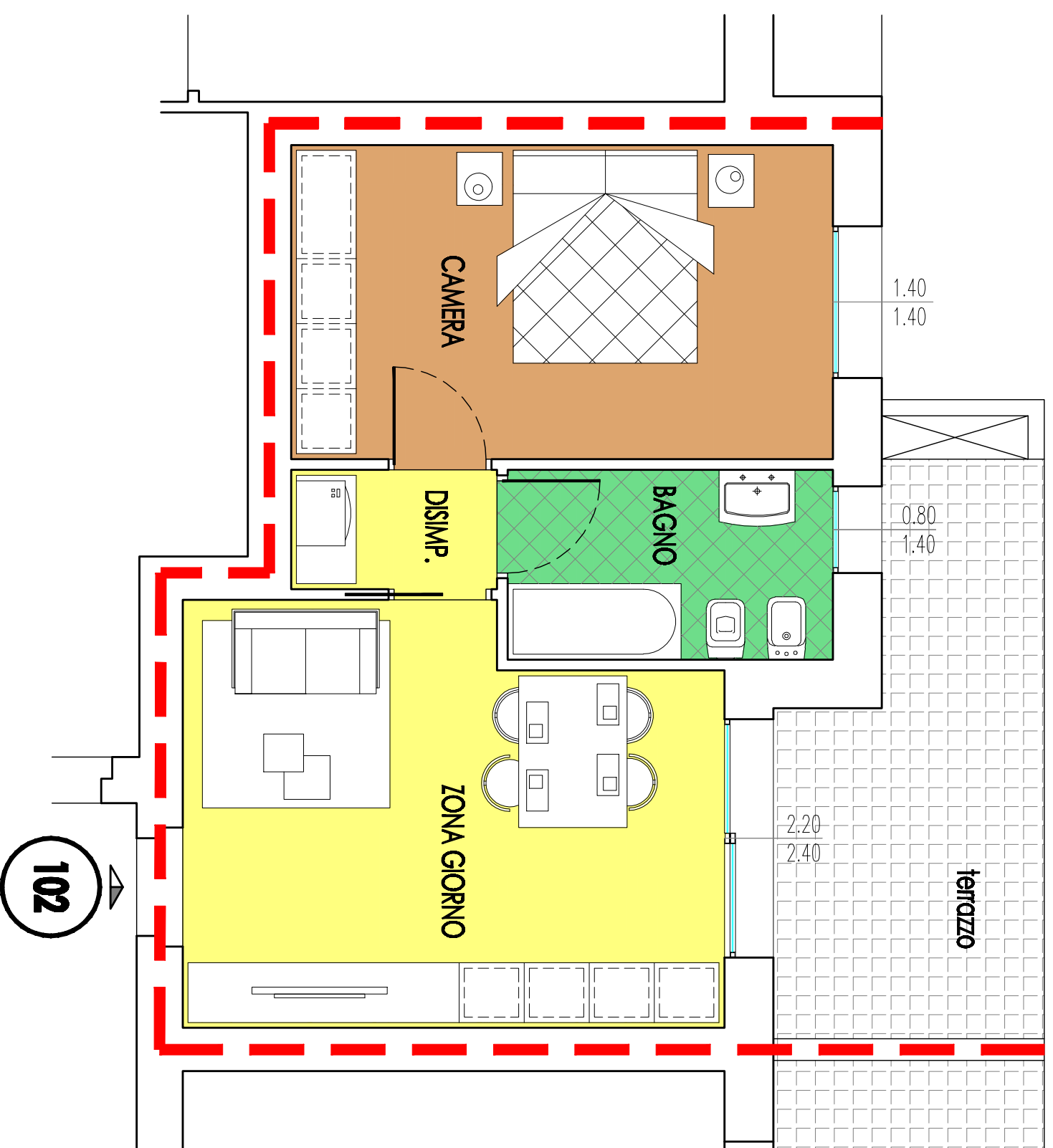
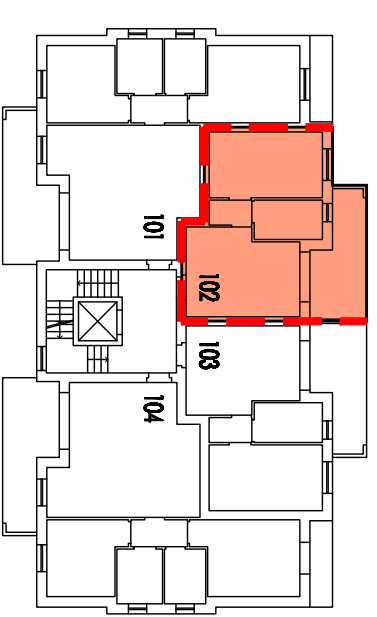


PIANO PRIMO - APPARTAMENTO 102	
SUPERFICIE LORDA DI PROGETTO:	49,56 mq
SUPERFICIE BALCONE:	12,15 mq

LEGENDA			
	ZONA GIORNO		AUTORMIESTA
	ZONA NOTTE		LOCALI TECNICI COMUNI
	ZONA BAGNO		MARCIAPIEDE PRIVATO
	VERDE PRIVATO		TERRAZZA
	INDIVIDUAZIONE APPARTAMENTO SU CHIAVE LETTURA		



COSTRUZIONI
AGAZZI S.r.l.